

WPS-2800-6A

High-Power Voice and Siren System

Whelen's WPS-2800 Series Omni-Directional High-Power Voice and Siren Systems deliver clear and powerful voice and siren communication.

WPS-2800-6A BASIC SYSTEMS

Speaker Assembly:
Six WPS-2800 Speaker Cells, 50' of speaker cable and pole top mounting bracket.

Electronics Cabinet:
Three compartment, natural finish aluminum Type III case. Upper compartment: Six Power Amplifiers; Two System Motherboards; Power Supply; ESC-864 Electronic Siren Controller with integral timer, tone generator, local controls and microphone jack; battery switch and battery charger. Lower compartments: four heavy duty lead calcium batteries and battery trays.

WHELEN®
ENGINEERING COMPANY, INC.

Acoustic Performance

SPL @ 100': 121dBc

Estimated 70dB range: 3,600'

Estimated 60dB range: 7,200'

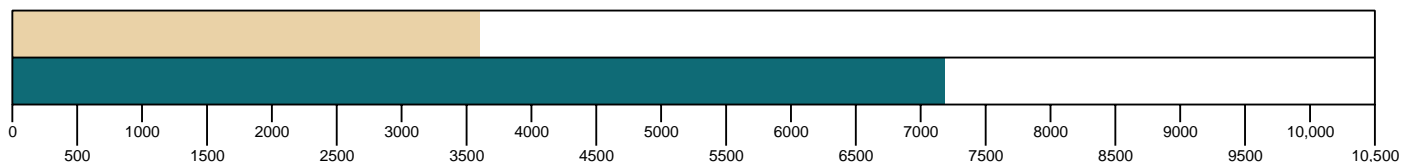
Note: 100' performance levels listed represent repeatable results within +/-2dB to stated levels. Estimated 70dB perimeter is based on the Federal Emergency Management Agency's (FEMA) -10dB per distance doubled path model.

SYSTEM FEATURES

- 121dBc @ 100'.
- 3,600' Estimated 70dB Warning Perimeter.
- Six Warning Tones.
- Public Address.
- Battery Powered with AC temperature compensated Battery Charger.
- Local Controls or Remote Controls.
- Six High Efficiency 400 Watt Speaker Drivers. (One Per High Gain Cell).

OPTIONS

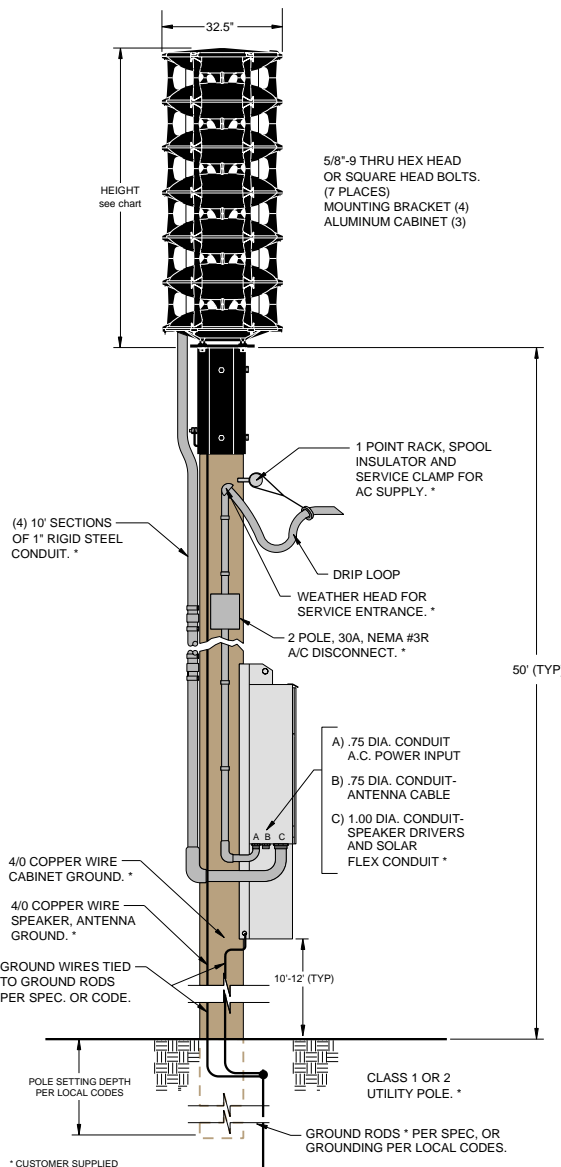
- Diagnostic Silent Test (SI TEST®).
- Remote Station Status Monitoring, COMM/STAT™.
- Remote Station Digital Voice up to 16 messages.
- Solar Power.



WPS-2800-6A

Specification Data

Component	Height Inches (CM)	Width Inches (CM)	Depth Inches (CM)	Weight Lbs. (KG)
WPS-2800-6A SPEAKER	80.8 (205)	32.5 (82.5)	—	370 (168)
ELECTRONICS CABINET TYPE III	64.4 (164)	30.0 (76)	10.0 (25.4)	424 (195.9)
POLE TOP BRACKET	30.5 (77)	12.0 (30.5)	10.0 (25.4)	71 (32)



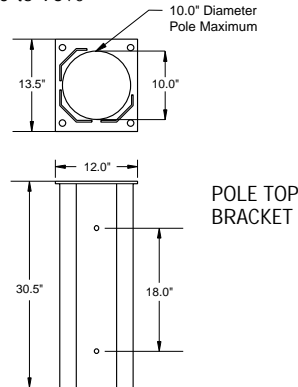
TYPE III
ELECTRONIC CABINET

ELECTRICAL

Battery Charger Input: 120VAC, 60Hz, 7A fuse
 Battery Charger Output: 28VDC, 10A
 Batteries: (4) 12V, 115AH lead calcium
 Standby Current: 135mA, 24VDC
 Operating Current: 133A, 24VDC
 Power Amplifier Output Power:
 Siren: 2400 Watts
 Voice: 3000 Watts

ENVIRONMENTAL

Operating Temperature:
 -35°C to +60°C
 Storage Temperature:
 -65°C to +125°C
 Humidity, Non Condensing:
 0 to 95%



WHELEN[®] ENGINEERING COMPANY, INC.

Route 145, Winthrop Road
 Chester, Connecticut 06412-0684
 (860) 526-9504
 1-800-637-4736
 Fax: (860) 526-4784
 Internet: www.whelen.com

Whelen Engineering Company, Inc. reserves the right to upgrade its products with design improvements without notification.
 © 2000 Whelen Engineering Company, Inc.
 Printed in the U.S.A.
 122099-10919B

ORDERING INFORMATION

Basic System: WPS-2800-6A
Basic System Options:

- STP666A: Diagnostic Silent Test, SI TEST[®]
- RDVM: Remote Station Digital Voice¹
- D86410, D864L10, D864H10, D864U10: One-Way Radio Control²
- C86410, C864L10, C864H10, C864U10: Two-Way Radio Control/Status Monitoring, COMM/STAT^{TM2}
- CTCSS-R: Tone Squelch, Receive
- CTCSS-RT: Tone Squelch, Receive and Transmit
- INTRU: Intrusion Alarm
- LBALARM: Low Battery Alarm
- SBC-2/40, SBC-2/60: Solar Power³

NOTES

1. 1-16 messages available. Available message lengths: 15, 30 or 60 seconds.
2. 10 Digit DTMF Controls.
 Landline
 VHF Low Band (L), 30 - 50Mhz
 VHF High Band (H), 150 - 170Mhz
 UHF (U), 450 - 470Mhz
 VHF Low Band systems equipped with unity gain antenna. VHF High Band and UHF Systems equipped with 2 - 3dB gain omni-directional antenna. 35' RG58 antenna cable and antenna mounting bracket included.
3. Solar power option includes 2 - 40 or 2 - 60 watt panels, mounting bracket and regulator, (SBC-2/40, SBC-2/60).