

WPS-2800-9

High-Power Voice and Siren System

Whelen's WPS-2800 Series Omni-Directional High-Power Voice and Siren Systems deliver clear and powerful voice and siren communication.

WPS-2800-9 BASIC SYSTEMS

Speaker Assembly:
Nine WPS-2800 Speaker Cells, 50' of speaker cable and pole top mounting bracket.

Electronics Cabinet:
Three compartment, natural finish aluminum Type III case. Upper compartment: Nine Power Amplifiers; Two System Motherboards; Power Supply; ESC-864 Electronic Siren Controller with integral timer, tone generator, local controls and microphone jack; battery switch and battery charger. Lower compartments: four heavy duty lead calcium batteries and battery trays.



Acoustic Performance

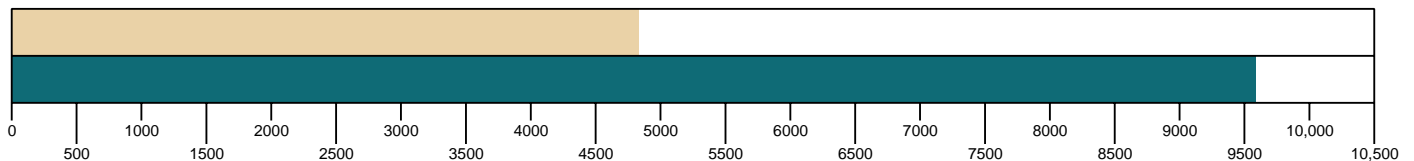
SPL @ 100': 125dBc

Estimated 70dB range: 4,800'

Estimated 60dB range: 9,600'

Note: 100' performance levels listed represent repeatable results within +/-2dB to stated levels.

Estimated 70dB perimeter is based on the Federal Emergency Management Agency's (FEMA) -10dB per distance doubled path model.



SYSTEM FEATURES

- 125dBc @ 100'.
- 4,800' Estimated 70dB Warning Perimeter.
- Six Warning Tones.
- Public Address.
- Battery Powered with AC temperature compensated Battery Charger.
- Local Controls or Remote Controls.
- Nine High Efficiency 400 Watt Speaker Drivers. (One Per High Gain Cell).

OPTIONS

- Diagnostic Silent Test (SI TEST®).
- Remote Station Status Monitoring, COMM/STAT™.
- Remote Station Digital Voice up to 16 messages.
- Solar Power.



WPS-2800-9

Specification Data

Component	Height Inches (CM)	Width Inches (CM)	Depth Inches (CM)	Weight Lbs. (KG)
WPS-2800-9 SPEAKER	118.1 (300)	32.5 (82.5)	—	508 (230.4)
ELECTRONICS CABINET TYPE III	64.4 (164)	30.0 (76)	10.0 (25.4)	445 (202.3)
POLE TOP BRACKET	30.5 (77)	12.0 (30.5)	10.0 (25.4)	71 (32)

ELECTRICAL

Battery Charger Input: 120VAC, 60Hz, 7A fuse
 Battery Charger Output: 28VDC, 10A
 Batteries: (4) 12V, 115AH lead calcium
 Standby Current: 135mA, 24VDC
 Operating Current: 199A, 24VDC
 Power Amplifier Output Power:
 Siren: 3600 Watts
 Voice: 4500 Watts

WHELEN[®]
ENGINEERING COMPANY, INC.

Route 145, Winthrop Road
 Chester, Connecticut 06412-0684
 (860) 526-9504
 1-800-637-4736
 Fax: (860) 526-4784
 Internet: www.whelen.com

Whelen Engineering Company, Inc. reserves the right to upgrade its products with design improvements without notification.
 © 2000 Whelen Engineering Company, Inc.
 Printed in the U.S.A.
 122099-10922B

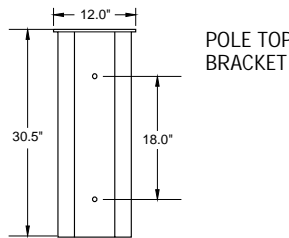
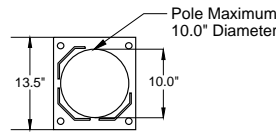
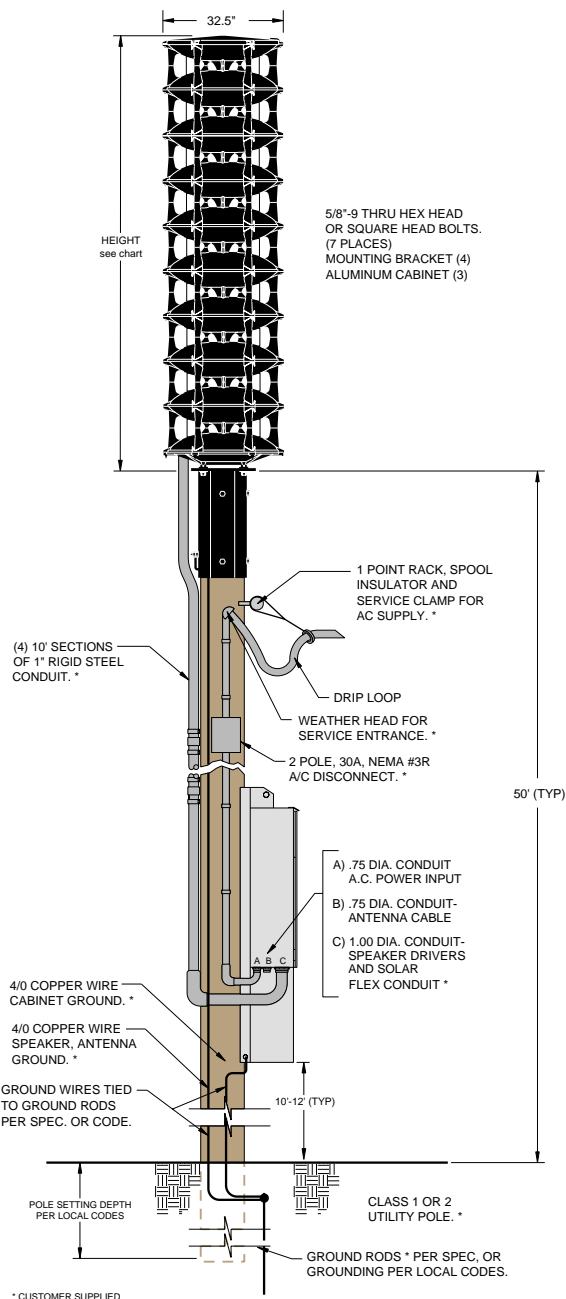
ENVIRONMENTAL

Operating Temperature:
 -35°C to +60°C
 Storage Temperature:
 -65°C to +125°C
 Humidity, Non Condensing:
 0 to 95%

ORDERING INFORMATION

Basic System: WPS-2800-9
Basic System Options:

- STP666A: Diagnostic Silent Test, SI TEST[®]
- RDVM: Remote Station Digital Voice¹
- D86410, D864L10, D864H10, D864U10: One-Way Radio Control²
- C86410, C864L10, C864H10, C864U10: Two-Way Radio Control/ Status Monitoring, COMM/STAT^{TM2}
- CTCSS-R: Tone Squelch, Receive
- CTCSS-RT: Tone Squelch, Receive and Transmit
- INTRU: Intrusion Alarm
- LBALARM: Low Battery Alarm
- SBC-2/40, SBC-2/60: Solar Power³



TYPE III
 ELECTRONIC CABINET

NOTES

1. 1-16 messages available. Available message lengths: 15, 30 or 60 seconds.
2. 10 Digit DTMF Controls.
 Landline
 VHF Low Band (L), 30 - 50Mhz
 VHF High Band (H), 150 - 170Mhz
 UHF (U), 450 - 470Mhz
 VHF Low Band systems equipped with unity gain antenna. VHF High Band and UHF Systems equipped with 2 - 3dB gain omni-directional antenna. 35' RG58 antenna cable and antenna mounting bracket included.
3. Solar power option includes 2 - 40 or 2 - 60 watt panels, mounting bracket and regulator, (SBC-2/40, SBC-2/60).