

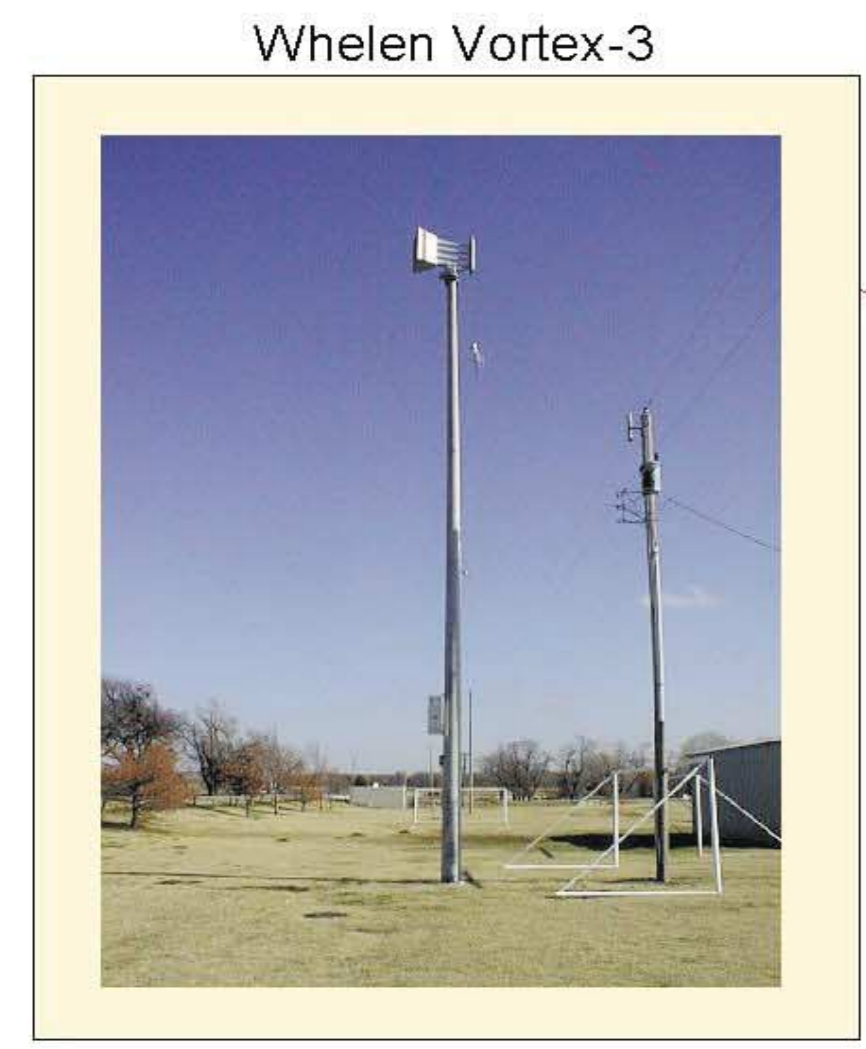


# Fort Worth Outdoor Warning System

Proposed Coverage for Ft. Worth based on population density. Each circle represents a Vortex-3 Siren with a radius of 5400 sq. ft.

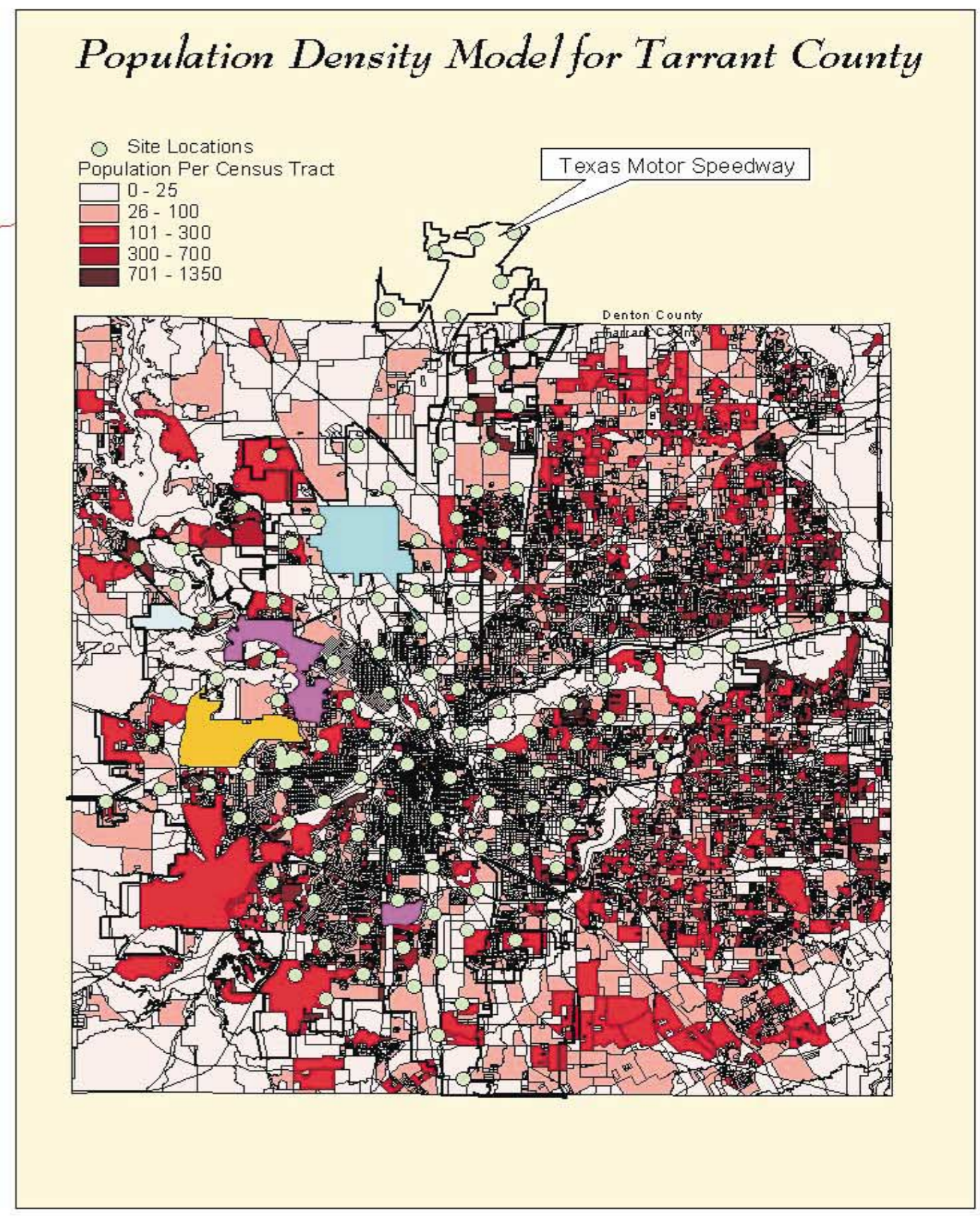
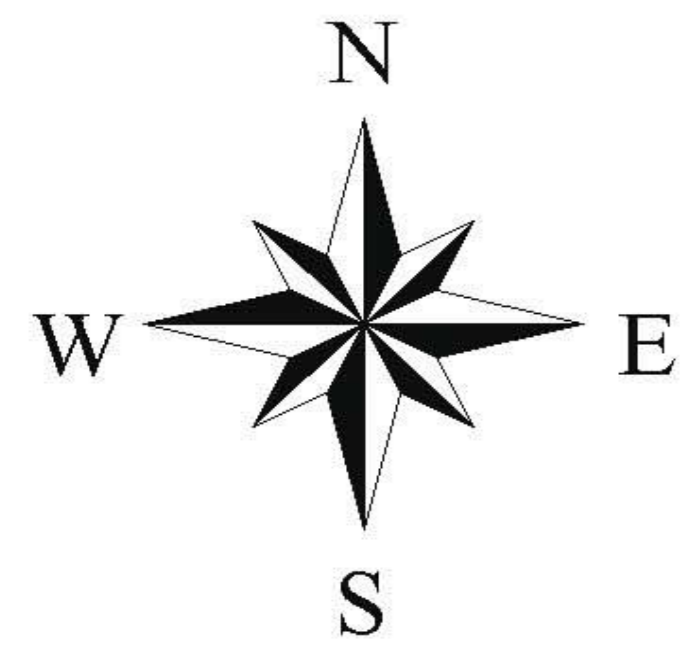
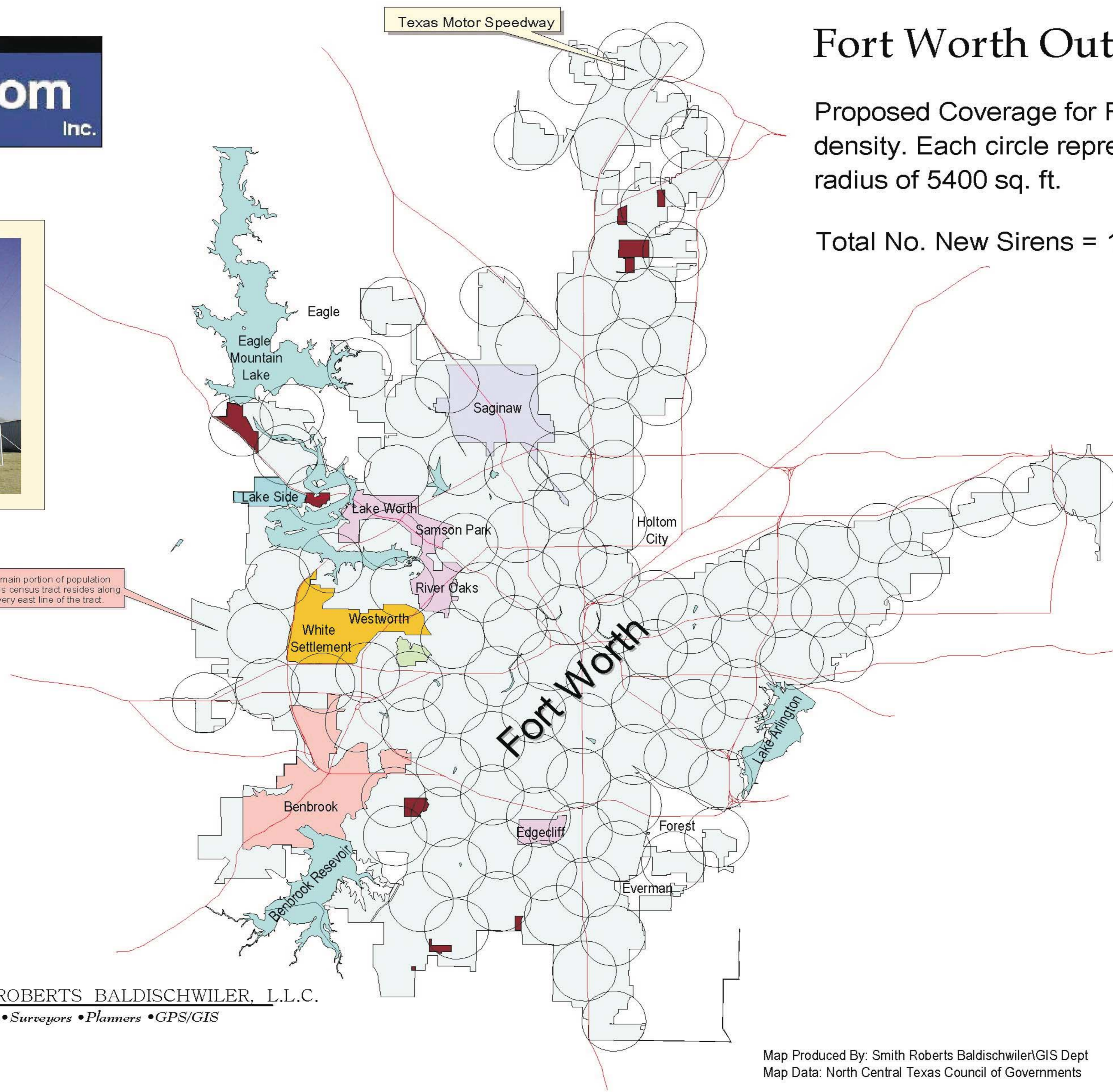
Total No. New Sirens = 115 Vortex-3

Using 2000 census data at the census tract level combined with an overlaid map of the city's existing boundaries, Smith Roberts Baldischwiler was able to produce an intelligent design plan. This design plan also takes into account recent annexations according to the "city limits" base map that was provided by the Public Safety Department in a MicroStation Cadd format. Census Data also gave us another attribute to design our coverage plan and this was land use. Land use information, population density, accurate base maps, and topographic features allowed us to complete this comprehensive design plan.



Whelen Vortex-3

The main portion of population in this census tract resides along the very east line of the tract.



SMITH ROBERTS BALDISCHWILER, L.L.C.  
Engineers • Surveyors • Planners • GPS/GIS

Map Produced By: Smith Roberts Baldischwiler/GIS Dept  
Map Data: North Central Texas Council of Governments